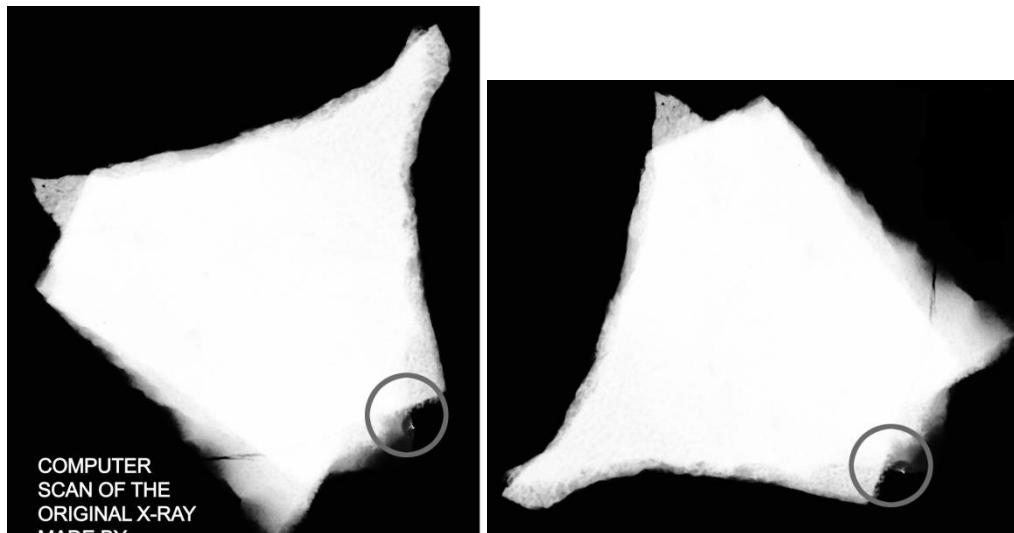


**Correction for my 2009 JFK Lancer talk:
Where was the metal smear on the Harper Bone Fragment?**

I caused confusion about this issue in Dallas during my 2009 presentation at JFK Lancer. This arose because of some rotational symmetry to the Harper Fragment (my mind had flipped to a mirror image). The X-ray of this fragment and its mirror image are shown side by side for comparison (Figures A and B); they are different enough that such a mistake should not have occurred, but they are similar enough that a mistake could occur, so my apologies.

The metallic smear is correctly identified in the Harper photograph (Figure C). On the other hand, in my talk the metallic smear had been incorrectly placed—*it should have been located at the opposite side of the fragment*. Kudos to Pat Speer for spotting this mistake. In fact, Speer and I agree on this site of metallic smear. So far as I know, so does everyone else.

What should be corrected is slide 20 in my 2009 JFK Lancer lecture.¹ (That mistake was perpetuated in my subsequent critique of Speer.²) Unfortunately, in that talk, I had argued that my (incorrect) site would have made a parietal origin for the fragment ridiculous. That argument cannot now be made. Instead, I would point to Figures A and C, in which the metallic smear is located correctly. However, my JFK skull reconstruction (as it originally appeared in *Murder in Dealey Plaza*) should still be correct: the smear lies close to the occipital protuberance, almost precisely at the entry site identified by the pathologists.



Figures A and B. X-ray image of HF on the left (as oriented at the Archives), and mirror image of HF on the right. They are shown here to a similar scale, with the metallic smear on the lower right on each. I mistakenly switched (in my mind) to the mirror image in my 2009 JFK Lancer talk.

¹ http://www.assassinationsscience.com/JFK_Skull_X-rays.htm.

² http://www.ctka.net/reviews/mantik_speer.html. Figure 11 incorrectly identifies the metallic smear. The same mistake also appears in Figure 3 of my review of Don Thomas's book:

http://www.ctka.net/reviews/mantik_thomas_review_pt1.html. So I owe Don an apology, too.

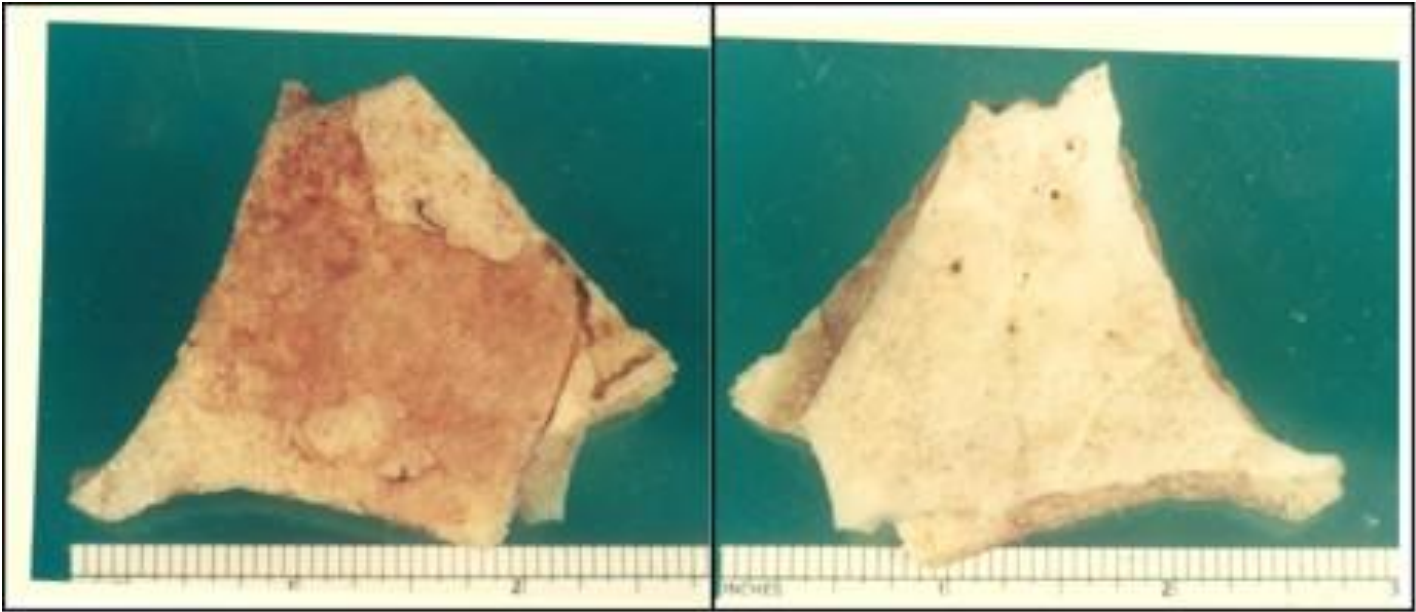


Figure C. Harper bone fragment, as photographed in Dallas. In the left image (exterior surface), note the faint metallic smear (red arrow). In the right image, the smear is not visible, but would be seen (on the other side) at the blue arrow.